



Eckdaten basic data (Sonderausführungen auf Anfrage)

Maximaldrehmoment <i>Maximum torque</i>	$M_{t_{max}}$ $M_{t_{max}}$	1350 Nm	Dauerwechsel Drehmoment <i>Alternating torque</i>	$M_{t_{dw}}$ $M_{t_{dw}}$	820 Nm
Grenzdrehmoment <i>Limit torque</i>	$M_{t_{grenz}}$ $M_{t_{grenz}}$	3000 Nm	Drehzahl <i>Revolution</i>		1-3000 U/min (rpm)
Betriebstemperatur <i>Operational temperature</i>		-30°C - +120°C			
Rotationsdurchmesser <i>Diameter of rotation</i>		Ø 97 mm (D5)			
Rohrdurchmesser <i>Tube diameter</i>		Ø 60x3 mm (D7)			

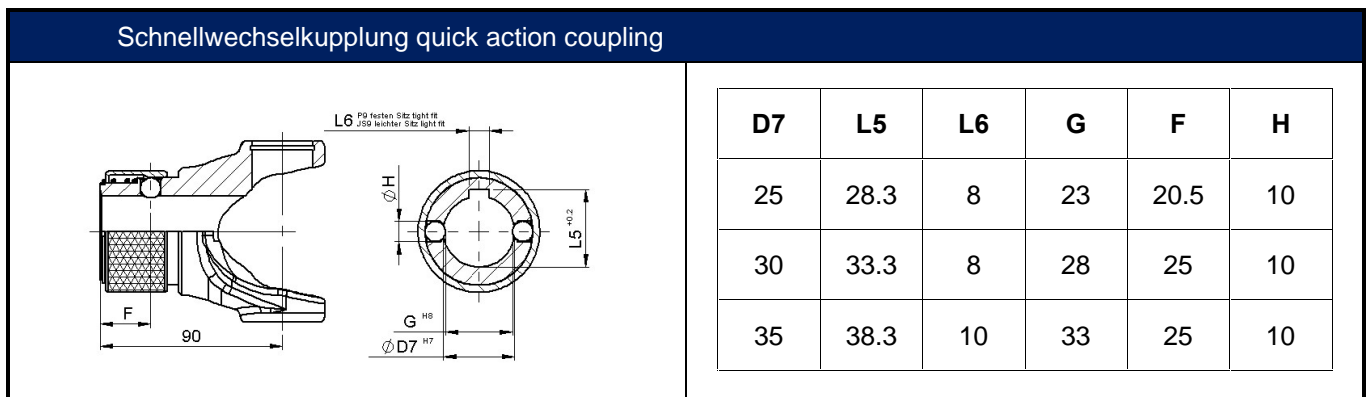
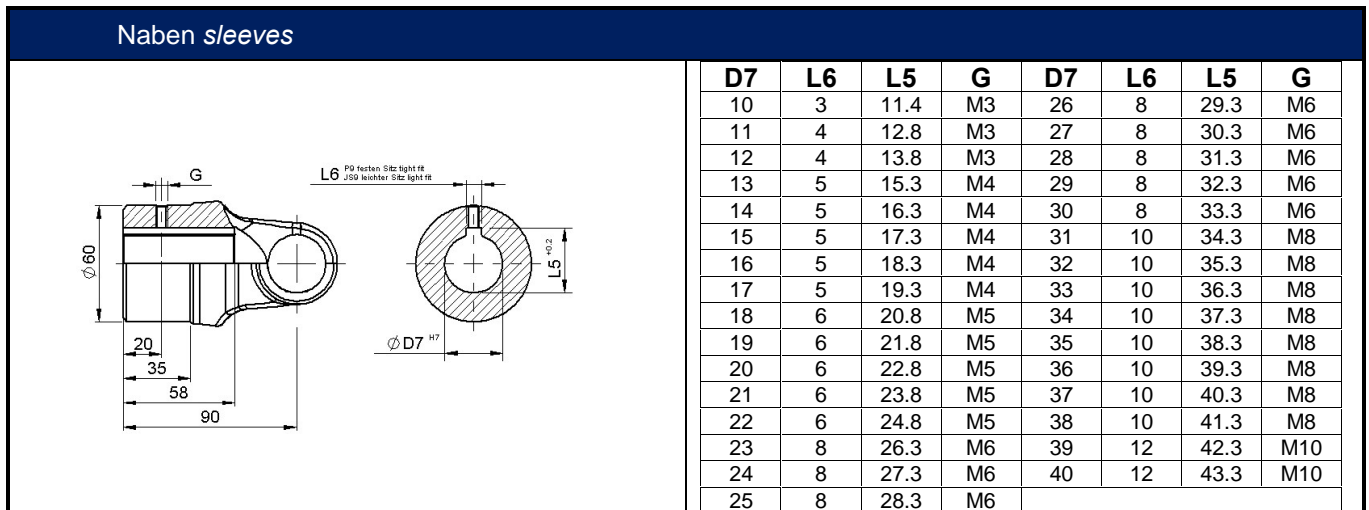
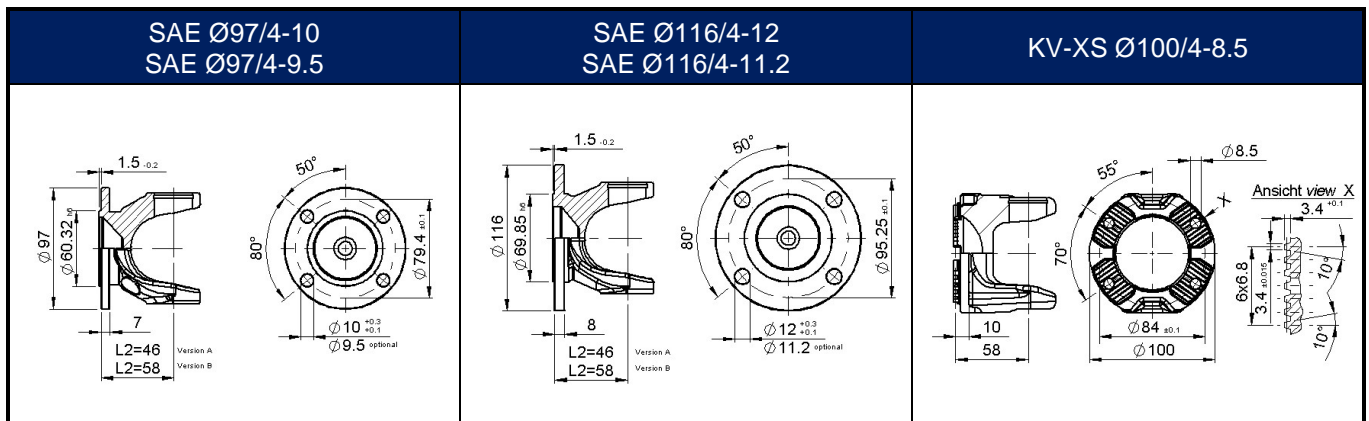
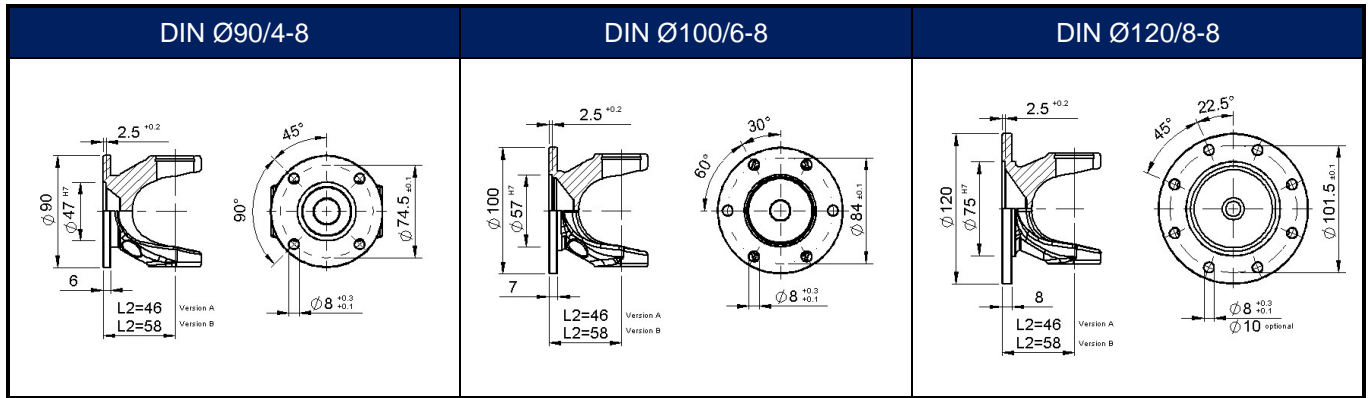
GW	500-077	
L1	min.435mm	
LA	110 mm	

GW	513-077	
L1	215-430mm	
LA	20-110mm	

GW	511-077	
L1	min.510mm	
LA	150mm	

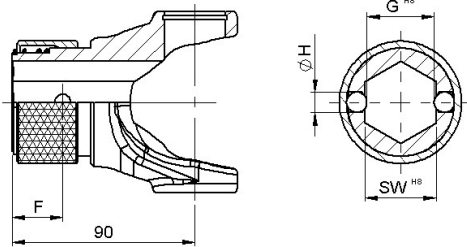
GW	505-077	
L1	min.240mm	

GW	507-077	506-077	
L1 Version A=(L2=46) B=(L2=58)	A=160mm B=184mm	A=92 mm B=116 mm	



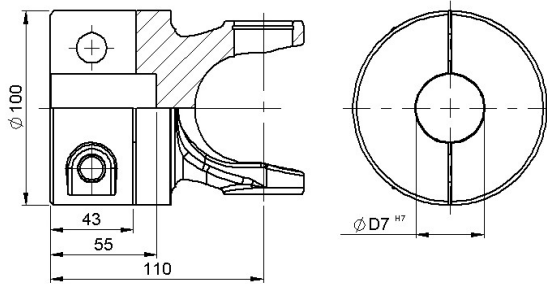


(Sechskant) Schnellwechselkupplung (hexagon) quick action coupling



SW	G	F	H
25	23	20.5	10
30	28	25	10
35	33	25	10

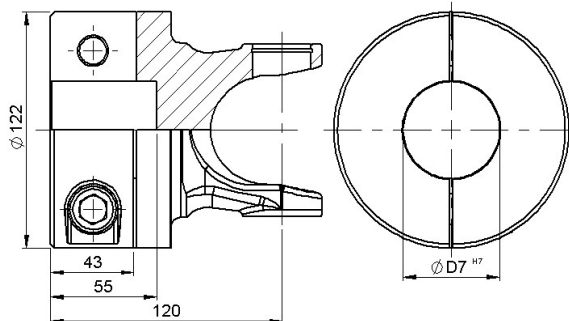
Klemmnabe clamping hub Ø100



Schrauben bolts
M14x40 DIN 912-12.9
Anzugsdrehmoment 195Nm
tightening torque 195Nm
Nach Befestigung sichern
lock after tightening

Mtmax	D7
553	25
575	26
619	28
664	30
708	32
752	34
774	35

Klemmnabe clamping hub Ø122



Schrauben bolts
DIN 912 M16x35-12.9
Anzugsdrehmoment 280Nm
tightening torque 280Nm
Nach Befestigung sichern
lock after tightening

Mtmax	D7
834	30
973	35
1112	40
1334	48
1390	50
1529	55
1668	60